

# Mepilex® Lite



## THE ABSORBENT THIN FOAM DRESSING WITH SAFETAC® TECHNOLOGY

- Minimizes pain and trauma at dressing changes<sup>1,2</sup>
- Highly conformable even over difficult-to-dress areas

### Safetac® technology layer

- Reduces pain and trauma during dressing change
- Does not adhere to the moist wound bed but to dry skin only
- Seals the wound margins and reduces risk of maceration

### Thin foam pad

- Absorbs exudate
- May be used under compression
- Conformable

### Polyurethane backing film

- Moisture resistant
- High MVTR
- Bacterial and viral barrier†



## Safetac® technology

### Safetac® technology: Less pain and less trauma.

Safetac is a patented adhesive technology that minimizes pain to patients and trauma to wounds. Safetac technology is available exclusively on Mölnlycke Health Care dressings, including Mepilex® wound care dressings, Mepitel®, Mepiform® and Mepitac®.

For more information visit [www.molnlycke.us](http://www.molnlycke.us)

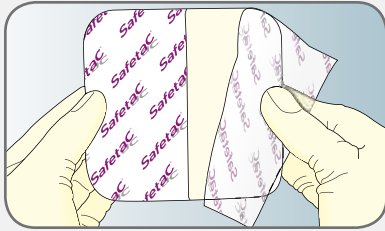


Skin stripping occurs with traditional adhesive



No skin stripping occurs with Safetac technology

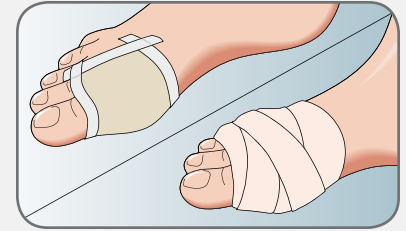
## How to use Mepilex® Lite



Clean the wound in accordance with normal procedures. Dry the surrounding skin thoroughly. Cut for customization, if required. Remove the larger release film.



Apply the adherent side to the wound. **Mepilex® Lite** should overlap the dry surrounding skin by 2 cm. Remove the shorter release film and mold the dressing in place. Do not stretch the dressing.



Secure **Mepilex® Lite** with a bandage or other fixation, such as **Mepitac®** or **Tubifast®**.

## How Mepilex® Lite works

**Mepilex® Lite** is a highly conformable dressing that absorbs exudate and maintains a moist wound environment. The **Safetac®** layer seals around the wound edges, preventing the exudate from leaking onto the surrounding skin, thus minimizing the risk of maceration. The **Safetac®** layer also ensures atraumatic dressing changes. **Mepilex® Lite** may be cut to suit various wound shapes and locations.

## Benefits of Mepilex® Lite

- Atraumatic to the wound and surrounding skin on removal
- Promotes patient comfort during wear and minimizes pain upon removal
- Minimizes the risk of maceration
- Conforms well to body contours
- Thin and comfortable to wear
- Easy to handle; may be cut for customization
- Maintains a moist wound environment
- Bacterial and viral barrier†

**Wear time:** Up to 7 days

## References:

1. White R., A Multinational survey of the assessment of pain when removing dressings. *Wounds UK* 2008; Vol 4, No 1.
2. Dykes PJ et al. Effects of adhesive dressings on the stratum corneum of the skin. *J Wound Care* 2001; 10(2):7-10.

† Microbes larger than 25 nm.

‡ Packaged sterile in single packs.

**Safetac®**  
TECHNOLOGY

5550 Peachtree Parkway, Suite 500, Norcross, GA 30092 | 800.882.4582 | [www.molnlycke.us](http://www.molnlycke.us) | [www.mhcwoundcare.com](http://www.mhcwoundcare.com)

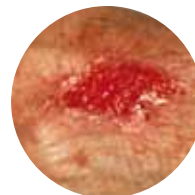
The Mölnlycke Health Care, **Mepilex**, **Mepitel**, **Mepiform**, **Mepitac**, and **Safetac**, names and respective logos are registered trademarks of Mölnlycke Health Care AB. Distributed by Mölnlycke Health Care US, LLC, Norcross, Georgia 30092. © 2011. Mölnlycke Health Care AB. 1.800.882.4582.

## Areas of use

- Non to low exuding wounds
- Leg and foot ulcers
- Pressure ulcers
- Partial thickness burns
- Radiation skin reactions
- Epidermolysis Bullosa
- Under compression bandaging
- Peristomal irritation
- In combination with gels
- Protection of compromised and/or fragile skin

## Note

In case of clinical signs of infection, consult a health care professional for adequate infection treatment.



Non to low exuding wound



Radiation skin reaction



Foot ulcer

## Mepilex® Lite Ordering Information‡

Product Code	Size	Pieces/box	Pieces/case	HCPCS
284090	2.4" x 3.4" (6 x 8.5 cm)	5	70	A6209
284190	4" x 4" (10 x 10 cm)	5	50	A6209
284390	6" x 6" (15 x 15 cm)	5	50	A6210
284590	8" x 20" (20 x 50 cm)	2	12	A6211

**MÖLNLYCKE®**  
HEALTH CARE

MHC-2011-0456 - 270080.11.11